

## Bathing water results 2011 – Portugal

### 1. Reporting and assessment

This report gives a general overview of bathing water quality in Portugal for the 2011 bathing season. Portugal has reported under the Directive 2006/7/EC since 2010. In 2010 Portugal sent historical data with two parameters of this Directive for some bathing waters for the years 2007-2009, while in 2011 historical data was sent for all bathing waters for the years 2008-2009.

When samples of intestinal enterococci and *Escherichia coli* for bathing water are available for three or four consecutive years, the assessment is done according to assessment rules of Directive 2006/7/EC. The frequency of sampling is set out in Annex IV of the Directive. Including a sample to be taken shortly before the start of the bathing season, the minimum number of samples taken per bathing season is four. However, only three samples are sufficient when the bathing season does not exceed eight weeks or the region is subject to special geographical constraints. Sampling dates are to be distributed throughout the bathing season.

Strictly speaking, there should be one pre-season sample and the interval between sampling should not exceed one month. Since a late start of monitoring and/or low frequency do not necessarily indicate unsatisfactory bathing water quality, it has been accepted that the first sample in the 2011 season could be taken shortly after the start of the season (but within 10 days after the start), and the maximum interval between two samples taken into account is 41 days. The number of samples for the period 2008-2011 should be at least 16. These criteria are described as less strict. In the opposite, under the strict rules, pre-season samples should be available in all four years, the interval between sampling in the 2011 season should have not exceeded one month, but 41 days were acceptable for the 2008, 2009 and 2010 seasons. In this report a quality class under the strict rules and less strict criteria are presented.

Bathing waters quality classified according to the Directive 2006/7/EC are 'excellent', 'good', 'sufficient' and 'poor'. Some bathing waters cannot be classified according to their quality but are instead classified as 'closed', 'new' (classification not yet possible), 'insufficiently sampled' or 'changes' (bathing water is not new and classification not yet possible since a set of monitoring data is incomplete).

### 2. Length of bathing season and number of bathing waters

The bathing season started between 1 May and 1 July 2011 and ended between 31 August and 31 October 2011 for coastal bathing waters. This includes the Azores and Madeira. Inland bathing waters opened between 14 May and 1 July 2011 and closed between 30 August and 30 September 2011.

A total of 514 bathing waters were monitored in Portugal during the 2011 bathing season, of which 431 were coastal (419) or transitional bathing waters (12) and 83 were inland bathing waters (63 on rivers; 20 on lakes). Two coastal bathing waters and one inland bathing water were reported as de-listed (permanently closed) compared to the previous year. A total of 13 coastal and seven inland bathing waters were added to the list.

With 514 reported bathing waters Portugal accounts for about 2.4 % of the reported bathing waters of the European Union.

### 3. Bathing water quality

The results of the bathing water quality in Portugal for the period 1991-2010 as reported in the past reporting years and for the bathing season of 2011 are presented in Figure 1. The previous reports are

available on the European Commission's bathing water quality website ([http://ec.europa.eu/environment/water/water-bathing/index\\_en.html](http://ec.europa.eu/environment/water/water-bathing/index_en.html); Water/ Bathing Water/ 2005-2011 reports) and the European Environment Agency's bathing water website (<http://www.eea.europa.eu/themes/water/status-and-monitoring/state-of-bathing-water>; reports for the 2008, 2009 and 2010 bathing seasons).

The graphs show the classification under the Directive 76/160/EEC and during transition period, for coastal and inland bathing waters from 1991 to 2010:

- The percentage of bathing waters that comply with the guide values (class CG, blue line);
- The percentage of bathing waters that comply with the mandatory values (class CI, green line);
- The percentage of bathing waters that do not comply with the mandatory values (class NC, red line);
- The percentage of bathing waters that are banned or closed (class B, grey line).

The same graphs show the classification under the Directive 2006/7/EC, for coastal and inland bathing waters for 2011:

- The percentage of bathing waters that have excellent quality (dark blue bar);
- The percentage of bathing waters that have good quality (light blue bar);
- The percentage of bathing waters that have sufficient quality (green bar);
- The percentage of bathing waters that have poor quality (red bar);
- The percentage of bathing waters that are closed (grey bar);
- The percentage of bathing waters that are insufficiently sampled, new or with changes (orange bar).

Table 1 and Table 2 show results of bathing water quality for coastal, inland and all bathing waters from 2008 on as assessed in the previous annual reports and under the Directive 2006/7/EC for the 2011 season. For the year 2010 results applying the less strict rules are presented if they differ from results applying the strict rules.

A map given in Appendix 1 shows the location and quality of the bathing waters.

### **Coastal bathing waters**

For the purpose of commenting the improvement or deterioration of bathing water quality from 2010, excellent quality is compared with compliance with the guide values; good quality and sufficient quality are compared with compliance with the mandatory value for *Escherichia coli* and not the guide values; and poor quality is compared with not compliant with mandatory value for *Escherichia coli*.

In Portugal, 88.2 % of the coastal bathing waters were of excellent quality in 2011. This is a decrease of 1.5 % compared to the previous year when 89.7 % of the bathing waters met the guide values. A total of 35 bathing waters (8.1 %) were of good quality and three bathing waters (0.7 %) were of sufficient quality compared to 40 bathing waters compliant with the mandatory value for *Escherichia coli* and not the guide values (9.6 %) in 2010. Two bathing waters (0.5 %) had poor quality compared to three bathing waters non-compliant with the mandatory value for *Escherichia coli* (0.7 %) in 2010. No bathing waters (0.0 %) were classified as closed, the same as in 2010. One bathing water was closed throughout the season and classified as excellent. A total of 10 bathing waters (2.3 %) were classified as new bathing waters and one bathing water (0.2 %) was classified as bathing water with changes.

For comparison since the start of the reporting please see Figure 1.

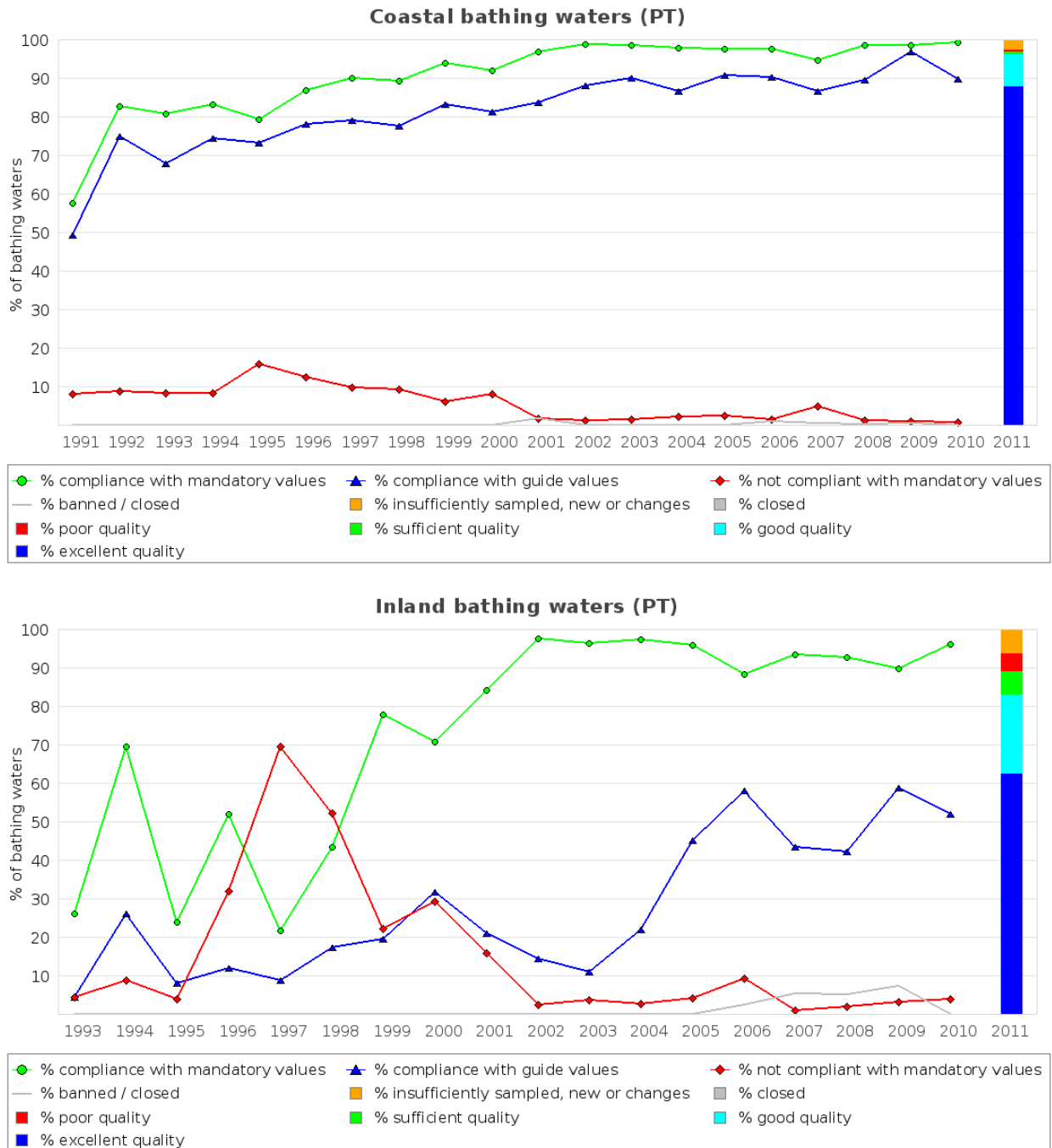
### **Inland bathing waters**

Some 62.7 % of the inland bathing waters were of excellent quality in 2011. This is an increase of 10.7 % compared to the previous year when 52.0 % of the bathing waters met the guide values. A total of 17 bathing waters (20.5 %) were of good quality and five bathing waters (6.0 %) were of sufficient quality compared to 33 bathing waters compliant with the mandatory value for *Escherichia coli* and not the guide values (44.0 %) in 2010. Four bathing waters (4.8 %) had poor quality compared to three bathing waters non-compliant with the mandatory value for *Escherichia coli* (4.0 %) in 2010. No bathing waters (0.0 %) were classified as closed, the same as in 2010. Four bathing waters (4.8 %)

were classified as new bathing waters and one bathing water (1.2 %) was classified as bathing water with changes.

For comparison since the start of the reporting please see Figure 1.

**Figure 1: Results of bathing water quality in Portugal from 1991 to 2011**



Note: Data until 2008 is available in the previous reports at [http://ec.europa.eu/environment/water/water-bathing/index\\_en.html](http://ec.europa.eu/environment/water/water-bathing/index_en.html); Water/Bathing Water/ 2005-2011 reports.

**Table 1: Results of bathing water quality in Portugal from 2008 to 2010. Assessment under Directive 76/160/EEC and during transition period.**

PT												
		Total number of bathing waters	Compliance with guide and mandatory values*		Compliance with mandatory values		Not compliant		Banned/closed		Insufficiently sampled or not sampled	
			number	%	number	%	number	%	number	%	number	%
Coastal bathing waters	2008	436	390	89.4	430	98.6	5	1.1	1	0.2	0	0.0
	2009	443	429	96.8	437	98.6	4	0.9	2	0.5	0	0.0
	2010	417	374	89.7	414	99.3	3	0.7	0	0.0	0	0.0
	2011											
Inland bathing waters	2008	97	41	42.3	90	92.8	2	2.1	5	5.2	0	0.0
	2009	97	57	58.8	87	89.7	3	3.1	7	7.2	0	0.0
	2010	75	39	52.0	72	96.0	3	4.0	0	0.0	0	0.0
	2011											
All bathing waters	2008	533	431	80.9	520	97.6	7	1.3	6	1.1	0	0.0
	2009	540	486	90.0	524	97.0	7	1.3	9	1.7	0	0.0
	2010	492	413	83.9	486	98.8	6	1.2	0	0.0	0	0.0
	2011											

\*Bathing waters which were compliant with the guide values were also compliant with the mandatory values for five parameters under the Directive 76/160/EEC (2008-2009) or the mandatory value for *Escherichia coli* (2010).

**Table 2: Results of bathing water quality in Portugal for 2011. Assessment under Directive 2006/7/EC.**

PT																		
	Year/Total number of bathing waters	Excellent quality		Good quality		Sufficient quality		Poor quality		Closed		Insufficiently sampled		New		Changes		
		No.	%	No.	%	No.	%	No.	%	No.	%	No.	%	No.	%	No.	%	
Coastal bathing waters	2009																	
	2010																	
	2011	431	380	88.2	35	8.1	3	0.7	2	0.5	0	0.0	0	0.0	10	2.3	1	0.2
	2011 <sup>(s)</sup>	431	380	88.2	35	8.1	3	0.7	2	0.5	0	0.0	0	0.0	10	2.3	1	0.2
Inland bathing waters	2009																	
	2010																	
	2011	83	52	62.7	17	20.5	5	6.0	4	4.8	0	0.0	0	0.0	4	4.8	1	1.2
	2011 <sup>(s)</sup>	83	52	62.7	17	20.5	5	6.0	4	4.8	0	0.0	0	0.0	4	4.8	1	1.2
All bathing waters	2009																	
	2010																	
	2011	514	432	84.0	52	10.1	8	1.6	6	1.2	0	0.0	0	0.0	14	2.7	2	0.4
	2011 <sup>(s)</sup>	514	432	84.0	52	10.1	8	1.6	6	1.2	0	0.0	0	0.0	14	2.7	2	0.4

<sup>(s)</sup>Strict rules applied (see Chapter 1 of this report).

#### 4. Important information as provided by the Portuguese authorities

The Portuguese authorities have reported significant management measures and reasons for changes (Appendix 2). Additional information is provided in a separate document ([http://cdr.eionet.europa.eu/pt/eu/nbwd/envtxwaea/Annex\\_ManMeas.doc](http://cdr.eionet.europa.eu/pt/eu/nbwd/envtxwaea/Annex_ManMeas.doc)).

The Portuguese authorities have also provided the links to bathing water profiles by river basin districts: [http://cdr.eionet.europa.eu/pt/eu/nbwd/envt1dr4g/Profiles\\_Link\\_2March.docx](http://cdr.eionet.europa.eu/pt/eu/nbwd/envt1dr4g/Profiles_Link_2March.docx)

## 5. More information on bathing water quality in Europe

Of the more than 21 000 bathing areas monitored throughout the European Union in 2011, two thirds were in coastal waters and the rest in rivers and lakes. The largest numbers of coastal bathing waters can be found in Italy, Greece, France and Spain, while Germany and France have the highest numbers of inland bathing waters.

During recent years, including the 2011 bathing season, majority of Member States have adjusted their monitoring programmes to meet the requirements of the new bathing water directive (2006/7/EC). Luxembourg was the first country to report under this Directive in 2007. Cyprus, Denmark, Estonia, Finland, Germany, Hungary, Latvia, Lithuania, Slovakia, Spain and Sweden started to report under the new directive in 2008. Malta and the Netherlands started to report in 2009. Austria, Belgium - Walloon Region, France, Greece, Italy, Portugal and Slovenia reported under the new directive for the first time in 2010, while Belgium - Flemish Region, Bulgaria, Ireland and Poland reported under this Directive for the first time in 2011. Historical data of two microbiological parameters, *Escherichia coli* and intestinal enterococci were sent by Sweden (2005-2007), Luxembourg (2006), Malta (2006-2008), Belgium - Walloon Region (2007-2009), Belgium - Flemish Region (2008-2010), Greece (2007-2009), Hungary (2007) and Portugal (2007-2009).

Three non-EU countries, Croatia, Montenegro and Switzerland have reported monitoring results under the new directive. Croatia and Switzerland started to report in 2009, while Montenegro reported for the first time in 2010. Switzerland sent data on *Escherichia coli* for all bathing waters but only for some data on intestinal enterococci.

For the 2011 season, bathing water quality has been assessed under the new bathing water directive in 16 European countries. This is 13 more than for 2010 bathing season. Only three countries - the Czech Republic, Romania and the United Kingdom - are still assessed under the old bathing water directive. Eleven countries are assessed under the transition period rules.

Overall in 2011, 92.1 % of bathing waters in the EU met the minimum water quality standards set by the bathing water directives. Bathing water quality increased at 0.6 % of sites in 2011 compared to 2010. The proportion of bathing waters with excellent quality (or complying with the more stringent guide values) increased by 3.5 percentage points compared to 2010, reaching 77.1 %. The share of non-compliant bathing waters was 1.8 %, which was a 0.1 percentage point increase from 2010. In 2011, 207 bathing waters were banned or closed (1 %), which was 57 more than in the 2010 bathing season.

More information on bathing water quality in the European Member States, including the EU summary report, the reports for 27 Member States, Croatia, Montenegro and Switzerland, can be found on the European Commission's bathing water quality website ([http://ec.europa.eu/environment/water/water-bathing/index\\_en.html](http://ec.europa.eu/environment/water/water-bathing/index_en.html)) and the European Environment Agency's bathing water website (<http://www.eea.europa.eu/themes/water/status-and-monitoring/state-of-bathing-water>). The Institute for Water of the Republic of Slovenia (IWRIS), a partner in the EEA European Topic Centre on Inland, Coastal and Marine Waters (ETC/ICM) has produced the reports for the bathing seasons from the 2008 bathing season on. Countries have collaborated in the assessment of bathing water quality and supplied additional information when needed.

### Interactive information on bathing water quality

The bathing water section of the Water Information System for Europe (WISE), which is accessible at the EEA bathing water website, allows users to view the bathing water quality at more than 22 000 coastal beaches and inland sites across Europe. Users can check bathing water quality on an interactive map or can download data for a selected country or region and make comparisons with previous years.

The WISE map viewer (<http://www.eea.europa.eu/themes/water/interactive//bathing>) is an online map viewer for visualising European spatial water data. It includes a lot of interactive layers, allowing water themes to be visualised at different scales. Broad resolutions display the aggregated data by Member State. At finer resolutions the locations of monitoring stations are displayed.

The WISE bathing water quality data viewer (<http://www.eea.europa.eu/themes/water/status-and-monitoring/bathing-water-data-viewer>) combines text and graphical visualisation, providing a quick check on locations and statistics on the quality of coastal and inland bathing waters. It also documents how bathing waters have changed throughout Europe in recent years and provides a full summary of Europe's bathing water quality. Users can search information at three spatial levels - country, region and province - and observe specific bathing water locations on Google Earth, Google maps or Bing maps.

The Eye on Earth - Water Watch application (<http://www.eea.europa.eu/data-and-maps/explore-interactive-maps/eye-on-earth>) allows users to zoom in on a section of the coast, riverbank or lake, both in street map or, where available, bird's eye viewing formats. A 'traffic-light' indicator (red, amber, green) of bathing water quality, based on the official bathing water data, is put alongside the ratings of people who have visited the bathing site, including any comments added by users. For historical data Water Watch uses a simplified index of bathing water quality data. The Czech Republic, Croatia, Denmark, Estonia, Finland (one municipality), Greece, Hungary, Lithuania, Luxembourg, Malta, Slovakia, Slovenia, England and Wales were also sending near real time information on bathing water quality to the Eye on Earth application. The bathing water quality for Austria, Belgium, Bulgaria, France, Germany, Iceland, Italy, Ireland, the Netherlands, Portugal, Sweden, Scotland and Northern Ireland was also presented on the Eye on Earth - Water Watch.

### **National and local information on bathing water quality**

In order to make information to the public more effective, all EU countries have national or local web portals with detailed information for each bathing water. Websites generally include a map search function and public access to the monitoring results both in real time and for previous seasons.

### **Information on EU bathing water legislation**

EU Member States will have to comply with the stricter and more ambitious requirements laid out in Directive 2006/7/EC by 2015 at the latest. The new legislation requires more effective monitoring and management of bathing waters, greater public participation and improved information dissemination. By March 2011 Member States have to have established bathing water profiles. More on the new legislation can be found on the European Commission's websites and on <http://eur-lex.europa.eu/LexUriServ/LexUriServ.do?uri=OJ:L:2006:064:0037:0051:EN:PDF>.

# Appendix 1

**Map 1: Bathing waters reported during the 2011 bathing season in Portugal**



## Appendix 2: Information on management measures and reasons for changes for the 2011 season as reported by the Portuguese authorities

Unique Identification Code of Bathing Water	Bathing Water Name	River Basin District	Bathing Water Category	Management Measures*
PTCD8E	SAMOUQUEIRA	Sado e Mira	Coastal	Excluded - surveillance not available and security problem due to danger of collapse of the cliffs, number of bathers should be low;
PTCV2P	MARINHA	Ribeiras do Algarve	Coastal	Excluded because security problem due to danger of collapse of the cliffs, number of bathers should be low;
PTCV9Q	VAU	Vouga, Mondego, Lis e Ribeiras do Oeste	River	Excluded - this bathing water is going to disappear due to the construction of a dam.
PTAU9N	S. LOURENCO	Açores	Coastal	Closed for all 2011 bathing season, in spite it was expected to open after renovation measures/construction work; monitoring sampling program was possible.
PTCE2J	QUINTAS	Douro	River	Temporarily closed from 7 until 14 July and 8 until 15 September (official monitoring calendar sampling 5 July and 6 September); information to the public/ to the bathers /advise against bath after obtained sampling results of official monitoring calendar; additional samples to verify end of pollution; unknown reasons to this pollution/increased microbial concentration probably due to illegal wastewater discharge. Authorities/municipality are investigating that and will reinforce the inspection actions on the Quintas water stream which flows into the sea at the beach to identify the reasons and to implement management actions, to stop illegal discharges and to improve the quality of BW. We suppose that weather conditions with heavy rains and consequent surface runoff before sampling could explain the temporary high microbial concentrations.
PTCE3N	LUZ	Ribeiras do Algarve	Coastal	Temporarily closed - bathing prohibition (23 until 26 September); information to public/recommendation against bath; non microbial reasons: toxic algae ( <i>ostreopsis siamensis</i> ), that can impair bathers' health; natural causes/water temperature
PTCF7N	LENTA	Minho e Lima	Transitional	Temporarily closed (3 until 10 August) after sampling of official monitoring calendar 1 August; information to the public/ bathers /advise against bath after obtained sampling results of official monitoring calendar ; additional samples to verify end of pollution; unknown reasons; additional sample to verify end of pollution; unknown reasons to high microbiological concentration : could be high amount of precipitation/heavy rains conditions
PTCF8C	PRADO FAIAL	Cavado, Ave e Leca	River	Temporarily closed - information to the public/ to the bathers /advise against bath after obtained sampling results of official monitoring calendar (22 August) not suitable to bath; additional samples to verify end of pollution; unknown reasons to high microbial concentration : could be high amount of precipitation/heavy rains conditions some days before take sampling.
PTCJ9N	SECA	Douro	Coastal	Temporarily closed and advice against bathing from 8 to 15 June, due to sampling results of official monitoring calendar (7 Jun), and additional sample taken on 14 of June to verify end of pollution; temporarily closed and advice against bathing from 22 to 29 Jun, due to sampling results of official monitoring calendar (21 Jun); temporarily closed, with bathing prohibited, from 11 to 21 of July, as precaution, because problems with the wastewater drainage system/wastewater treatment system (pumping) existing since the 7th of June were still being solved. Every year, during May, the municipality authorities verify the conditions and clean sewage collectors. Some sewage structures are old. Still, there's variability in bathing water quality as a water stream flows into the sea through the beach, which is more important after rains.
PTCK2D	D. ANA	Ribeiras do Algarve	Coastal	Temporarily closed - bathing prohibition (23 until 26 September); information to public/recommendation against bath; non microbial reasons: toxic algae ( <i>ostreopsis siamensis</i> ), that can impair bathers' health; natural causes/water temperature
PTCK7Q	BOCA DO RIO	Ribeiras do Algarve	Coastal	Temporarily closed - bathing prohibition (23 until 26 September); information to public/recommendation against bath; non microbial reasons: toxic algae ( <i>ostreopsis siamensis</i> ), that can impair bathers' health; natural causes/water temperature
PTCK8L	INGRINA	Ribeiras do Algarve	Coastal	Temporarily closed - bathing prohibition (23 until 26 September); information to public/recommendation against bath; non microbial reasons: toxic algae ( <i>ostreopsis siamensis</i> ), that can impair bathers' health; natural causes/water temperature
PTCL2Q	PENECO	Ribeiras do Algarve	Coastal	Temporarily closed (30 until 31 May and 2 until 3 August); information to the public/ bathers /recommendation/advise against bath after obtained sampling results of official monitoring calendar; additional samples to verify end of pollution; reason to high microbial concentration could be high amount of precipitation; authorities are preparing



Unique Identification Code of Bathing Water	Bathing Water Name	River Basin District	Bathing Water Category	Management Measures*
				measures to find a solution to some "microbiological exceedances" with unknown/unexpected reasons and to improve BW quality;
PTCL3C	CAVEZ	Douro	River	Temporarily closed (24 until 31 august) information to the public/ bathers/ recommendation/advise against bath after obtained sampling results of oficial monitoring calendar not suitable to bath; (22 august) - additional samples to verify end of pollution; reasons to high microbiol concentration could be high amount of precipitation/heavy rains conditions some days before monitoring sampling of oficial monitoring calendar.
PTCN2M	ZAVIAL	Ribeiras do Algarve	Coastal	Temporarily closed - bathing prohibition (from 23 until 26 september) because non microbial conditions: toxical algae (ostreopsis siamensis), that can impair bathers' health;/natural causes/water temperature;
PTCN3V	CAMILO	Ribeiras do Algarve	Coastal	Temporary closed from 19 to 22 of august, with advice against bathing, after sampling results of oficial monitoring calendar (17 of august); additional sample was taken to verify the end of pollution; unknown reasons to high microbiological concentration: could be high amount of precipitation; temporarily closed, with bathing prohibited, from 23 to 26 of september, because of non microbiological reasons: toxical algae (ostreopsis siamensis)/natural reasons/water temperature conditions.
PTCN7X	FURNAS	Ribeiras do Algarve	Coastal	Temporarily closed - bathing prohibition (from 23 until 26 september) non microbial reasons: toxical algae (ostreopsis siamensis), that can impair bathers' health; natural causes/water temperature;
PTCP2X	PORTO DE MOS	Ribeiras do Algarve	Coastal	Temporarily closed - bathing prohibition (from 23 until 26 september) because non microbial conditions: toxical algae (ostreopsis siamensis), that can impair bathers' health; natural causes/water temperature;
PTCP7D	DEVESA	Douro	River	Temporarily closed (24 until 31 august); information to the public/ to the bathers /advise against bath after obtained sampling results of oficial monitoring calendar not suitable to bath; additional samples to verify end of pollution; unknown reasons to high microbiol concentration : could be high amount of precipitation/heavy rains conditions some days before take sampling;
PTCQ2E	ALMADENA-CABANAS VELHAS	Ribeiras do Algarve	Coastal	Temporarily closed - bathing prohibition ( 23 until 26 september) non microbial reasons:: toxical algae (ostreopsis siamensis), that can impair bathers' health;/natural causes/water temperature;
PTCQ2N	FRENTE AZUL	Douro	Coastal	Temporarily closed ( 8 until 15 jun); information to the public/ to the bathers /advise against bath after obtained sampling results of oficial monitoring calendar (7 jun) not suitable to bath; additional samples to verify end of pollution; microbial pollution due temporary problems in the wastewater drainage system/wastewater treatment system – pumping of elevation wastewater station failure, and it was difficult to obtain another adequate pump; during works, some management measures were taken to mimimize pollution;
PTCQ3J	SALEMA	Ribeiras do Algarve	Coastal	Temporarily closed - bathing prohibition ( 23 until 26 september) because non microbial conditions: toxical algae (ostreopsis siamensis), that can impair bathers' health; natural causes/water temperature;
PTCQ3X	FUSETA-RIA	Ribeiras do Algarve	Coastal	Temporarily closed (22 until 24 jun ); information to the public/ to the bathers /advise against bath after obtained sampling results of oficial monitoring calendar not suitable to bath; additional samples to verify end of pollution; unknown reasons to high microbiol concentration: could be high amount of precipitation/heavy rains conditions some days before take sampling;
PTCQ7E	PONTE DA BARCA	Minho e Lima	River	Re-opened BW 2011 (closed in 2010), after changes (authorities have verified that there was an animal source of contamination (ducks), so these ducks were removed from site; temporarily closed (24 until 31 August); information to the public/ to the bathers /advise against bath after obtained sampling results of oficial monitoring calendar (22 august); additional samples to verify end of pollution; high microbiol concentration - reason could be surface run off due high amount of precipitation/heavy rains conditions some days before take sampling ; authorities are preparing measures to find a solution to some "microbiological exceedances" with unknown/unexpected reasons and to improve BW quality;
PTCQ7H	VALE JUNCAL	Douro	River	Temporarily closed (25 august until 1 september); information to the public/ to the bathers /advise against bath after obtained sampling results of oficial monitoring calendar (23 august) not suitable to bath; additional samples to verify end of pollution; unknown reasons to high microbiological concentration: could be high amount of precipitation;
PTCQ8J	VILA PRAIA DE ANCORA	Minho e Lima	Coastal	Temporarily closed (24 until 25 august); information to the public/ to the bathers /advise against bath after obtained sampling results of oficial monitoring calendar (16

Unique Identification Code of Bathing Water	Bathing Water Name	River Basin District	Bathing Water Category	Management Measures*
				august; 22august) not suitable to bath; additional samples to verify end of pollution; unknown reasons;
PTCT2X	BELICHE	Ribeiras do Algarve	Coastal	Temporarily closed (15 until 16 jun ); information to the public/ to the bathers /advise against bath after obtained sampling results of oficial monitoring calendar not suitable to bath; additional samples to verify end of pollution; unknown reasons to high microbiological concentration : could be high amount of precipitation/heavy rains conditions;
PTCT7E	PONTILHÃO DA VALETA	Minho e Lima	River	Temporarily closed, with advice against bathing, from 10 to 24 of august, after monitoring result from the 8th of august was obtained, and pollution kept on going as seen in the results of the16th and the 22nd of august); information to the public/ to the bathers / after obtained sampling results of official monitoring calendar; additional samples to verify end of pollution; temporarily closed, with bathing prohibited, from 24 of august to 8 of september; these high microbiological concentrations occurred after precipitation/heavy rains conditions probably because pluvial systems may still receive some illegal discharges of wastewaters; the responsible municipality will intensify inspection on this issue to eliminate illegal discharges and to requalify old wastewater systems to improve BW quality. Local authorities intend to characterize pollution sources, reinforce the inspection actions on possible pollution sources and stop possible illegal discharges, either direct to the tributary streams or from the drainage of septic tanks. To prevent water quality degradation from forest fires, the local authority intends to create barriers to protect water streams.
PTCT7Q	POMARES	Vouga, Mondego, Lis e Ribeiras do Oeste	River	Temporarily closed (28 to 29 july); information to the public near vicinity of BW after sampling results of oficial monitoring calendar (sample of 25 july), with advise against bathing not suitable to bath- situation not predictable, no time to prevent public before this event; additional samples to verify end of pollution; reasons: wastewater pipe conduit broke out, because high amount of precipitation and surface run off /heavy rains conditions /and pluvial water intrusion on sewage system; additional monitoring of BW was carried (29 july); the municipality have improved measures (cleaning, open dam, etc) to restore the quality on BW area; re-opened BW 30 july;
PTCU2T	ALEMÃES	Ribeiras do Algarve	Coastal	Temporarily closed (from 30/5 until 31/5 and 2/8 until 3/8)//information to the public/ to the bathers /advise against bath after obtained sampling results of oficial monitoring calendar not suitable to bath/after heavy/intensive rains;
PTCU9H	ANGEIRAS NORTE	Cavado, Ave e Leca	Coastal	Temporarily closed, and advice against bathing, from 23 to 25 of august, after obtained sampling results of oficial monitoring calendar (22 august); additional sampling on the 24 th of august to verify end of pollution; This facts occurred after intensive precipitation conditions that opened the mouth of Onda river some days before the sampling; The sewage drainage system is being enlarged, works expected to be finished by 2013. Improvement of sewage pumping stations and sewage treatment plants is being done. A new treatment plant, with terciary treatment, is going to be constructed and serve two municipalities in the drainage basin. Still, water quality decreases after heavy rain episodes, mainly because a water stream flows into the sea through the beach.
PTCV3K	BURGAU	Ribeiras do Algarve	Coastal	Temporarily closed - bathing prohibition (23 until 26 september) non microbial reasons: toxical algae (ostreopsis siamensis), that can impair bathers' health;/natural causes/water temperature;
PTCV7F	AZUL - CONCHINHA	Cavado, Ave e Leca	Coastal	Temporarily closed (16 august) ; information to the public/ to the bathers /advise against bath after obtained sampling results of oficial monitoring calendar not suitable to bath; additional samples to verify end of pollution; reason: probably related with abnormal conditions of seaweed acumulation/abnormal situation; authorities are preparing measures to find a solution to some "microbiological exceedances" with unknown/unexpected reasons and to improve BW quality;
PTCV7T	INATEL-ALBUFEIRA	Ribeiras do Algarve	Coastal	Temporarily closed (31 may until 1 jun and 2 until 3 august)/information to the public/ to the bathers /advise against bath, after obtained sampling results; expected problems because of inundation area of bath near a usually small river/inundation area not suitable to bath; authorities are preparing measures to find a solution to some "microbiological exceedances" with unknown/unexpected reasons and to improve BW quality;
PTCV7X	PESCADORES	Ribeiras do Algarve	Coastal	Temporarily closed (2/8 to 3/8)//information to the public/ to the bathers /advise against bath , after obtained sampling results of oficial monitoring calendar not suitable to bath; high microbiological concentration - reason could be high amount of precipitation/heavy rains conditions
PTCV9U	OLHOS D'ÁGUA	Ribeiras do Algarve	Coastal	Temporarily closed ( 2 until 3 august); information to the public/ to the bathers /advise against bath after obtained sampling results of oficial monitoring calendar; additional

Unique Identification Code of Bathing Water	Bathing Water Name	River Basin District	Bathing Water Category	Management Measures*
				samples to verify end of pollution; unknown reasons to high microbiol concentration: could be high amount of precipitation/heavy rains conditions;
PTCW7D	S. FELIX DA MARINHA	Douro	Coastal	Temporarily closed (14 until 19 July); information to the public/ to the bathers /advise against bath after obtained sampling results of official monitoring calendar(12 July) not suitable to bath; additional monitoring sample 18 July; additional samples to verify end of pollution; high microbiol concentration - an inspection group has been established to evaluate eventual reasons but the reasons to the contamination remained unknown; authorities are preparing measures to find a solution to some "microbiological exceedances" with unknown/unexpected reasons and to improve BW quality;
PTCX3P	PARQUE DR JOSÉ GAMA	Douro	River	Temporarily closed (25 August until 9 September); information to the public/ to the bathers /advise against bath after obtained sampling results of official monitoring calendar (23 August) not suitable to bath; additional samples to verify end of pollution; reasons: probably illegal wastewater discharges;
PTAN7M	BARRO VERMELHO	Açores	Coastal	Re-opened due to increased/high number of bathers; closed 2010 because low number of bathers
PTCF2Q	RAINHA (CASCAIS)	Tejo	Coastal	Re-opened, after changes/renovation works. Major interventions were taken during the first semester of 2010, regarding the sewage drainage system of Cascais village and cleaning of Vinhas stream. In 2010 Duquesa, Conceição and Rainha were not identified as bathing waters. During that bathing season (2010) monitoring showed improvement in water quality and its compatibility with bathing water quality as stated in Directive 2006/7/EC. Considering the actions taken, Portugal decided to identify these three waters, Duquesa (PTCU7D), Conceição (PTCP7K) and Rainha (Cascais) (PTCF2Q) as bathing waters for 2011 and re-opened them.
PTCP7K	CONCEIÇÃO	Tejo	Coastal	Re-opened, after changes/renovation works. Major interventions were taken during the first semester of 2010, regarding the sewage drainage system of Cascais village and cleaning of Vinhas stream. In 2010 Duquesa, Conceição and Rainha were not identified as bathing waters. During that bathing season (2010) monitoring showed improvement in water quality and its compatibility with bathing water quality as stated in Directive 2006/7/EC. Considering the actions taken, Portugal decided to identify these three waters, Duquesa (PTCU7D), Conceição (PTCP7K) and Rainha (Cascais) (PTCF2Q) as bathing waters for 2011 and re-opened them.
PTCU7D	DUQUESA	Tejo	Coastal	Re-opened, after changes/renovation works. Major interventions were taken during the first semester of 2010, regarding the sewage drainage system of Cascais village and cleaning of Vinhas stream. In 2010 Duquesa, Conceição and Rainha were not identified as bathing waters. During that bathing season (2010) monitoring showed improvement in water quality and its compatibility with bathing water quality as stated in Directive 2006/7/EC. Considering the actions taken, Portugal decided to identify these three waters, Duquesa (PTCU7D), Conceição (PTCP7K) and Rainha (Cascais) (PTCF2Q) as bathing waters for 2011 and re-opened them.
PTAH9M	ZONA BALNEAR SANTA CRUZ (CALHETA)	Açores	Coastal	New bathing water; general measures applied.
PTAJ7W	ZONA BALNEAR DO FORNO DA CAL	Açores	Coastal	New bathing water; general measures applied.
PTAJ8L	PONTA DA FERRARIA	Açores	Coastal	New bathing water; general measures applied.
PTAL2K	BAIXA DA AREIA	Açores	Coastal	New bathing water; general measures applied.
PTAT2N	ZONA BALNEAR DAS POÇAS DA RIBEIRA GRANDE	Açores	Coastal	New bathing water; general measures applied.
PTCD3U	PORTO DA AREIA SUL	Vouga, Mondego, Lis e Riberias do Oeste	Coastal	New bathing water; general measures applied.
PTCD8X	SANDOMIL	Vouga, Mondego, Lis e Riberias do	River	New bathing water. Authorities are preparing measures to find a solution to some "microbiological exceedances" with unknown/unexpected reasons and to improve BW quality; General measures applied.

Unique Identification Code of Bathing Water	Bathing Water Name	River Basin District	Bathing Water Category	Management Measures*
		Oeste		
PTCH2D	CABO MONDEGO	Vouga, Mondego, Lis e Ribeiras do Oeste	Coastal	New bathing water. Authorities are preparing measures to find a solution to some "microbiological exceedances" with unknown/unexpected reasons and to improve BW quality; General measures applied.
PTCH7Q	FUZELHAS	Cavado, Ave e Leca	Coastal	New bathing water; general measures applied.
PTCH8X	RIBEIRA OU DOS PESCADORES	Vouga, Mondego, Lis e Ribeiras do Oeste	Coastal	New bathing water; general measures applied.
PTCJ9W	BOSTELIM	Tejo	River	New bathing water. Authorities are preparing measures to find a solution to some "microbiological exceedances" with unknown/unexpected reasons and to improve BW quality; General measures applied.
PTCK8M	BITETOS	Douro	Lake	New bathing water. Authorities are preparing measures to find a solution to some "microbiological exceedances" with unknown/unexpected reasons and to improve BW quality; General measures applied.
PTCL2W	VALEIRAS	Vouga, Mondego, Lis e Ribeiras do Oeste	Coastal	New bathing water. Authorities are preparing measures to find a solution to some "microbiological exceedances" with unknown/unexpected reasons and to improve BW quality; General measures applied.
PTCL3T	RECONQUINHO	Vouga, Mondego, Lis e Ribeiras do Oeste	River	New bathing water; general measures applied.
PTCQ2V	ALMARGEM	Ribeiras do Algarve	Coastal	New bathing water; general measures applied.
PTCT8H	ALBUFEIRA DA MEIMÔA	Tejo	Lake	New bathing water. Authorities are preparing measures to find a solution to some "microbiological exceedances" with unknown/unexpected reasons and to improve BW quality; General measures applied.
PTCU3V	TROVISCAL	Tejo	River	New bathing water. General measures applied. Reinforcement of the inspection actions both on local and on the river catchment level.
PTCV2Q	RELVA DA REBOLEIRA	Tejo	River	New bathing water; general measures applied.
PTCW2D	CONSOLAÇÃO NORTE	Vouga, Mondego, Lis e Ribeiras do Oeste	Coastal	New bathing water; general measures applied.
PTML2U	PORTO SANTO - LAGOA	Madeira	Coastal	New bathing water; general measures applied.
PTCD2N	CASTELO DO QUEIJO	Cavado, Ave e Leca	Coastal	Besides general measures, authorities are preparing measures to find a solution to some "microbiological exceedances" with unknown/unexpected reasons and to improve BW quality. According to the BW profile, the pluvial drainage system could be a possible pollution source for the BW; authorities/municipality have been implementing management plans since 2007 and works/actions to reinforce the inspection actions to stop that kind of discharges in the pluvial drainage system. Also public sensibilization on this matter.
PTCD8N	AGROAL	Tejo	River	Authorities are preparing measures to find a solution to some "microbiological exceedances" with unknown/unexpected reasons and to improve BW quality; General measures applied and reinforcement of the inspection actions both on local and on the river catchment level.
PTCJ7V	COSTINHA	Vouga, Mondego, Lis e Ribeiras do Oeste	Coastal	Authorities are preparing measures to find a solution to some "microbiological exceedances" with unknown/unexpected reasons and to improve BW quality. General measures applied.
PTCK7V	FRAGAS DE S. SIMÃO	Tejo	River	General measures applied. Authorities are preparing measures to find a solution to some "microbiological exceedances", including reinforcement of the inspection actions both on local and on the river catchment level to improve BW quality.
PTCU2C	MATOSINHOS	Cavado, Ave e Leca	Coastal	General measures applied. Authorities are preparing measures to find a solution to some "microbiological exceedances" with unknown/unexpected reasons and to improve BW quality. The wastewater system is being improved/enlarged.

Unique Identification Code of Bathing Water	Bathing Water Name	River Basin District	Bathing Water Category	Management Measures*
				Municipalities have been improving the fiscalization in order to recognize if there are still illegal discharges of domestic wastewater into the water streams. Also public sensibilization on this matter through the education system.
PTMU2P	S. ROQUE	Madeira	Coastal	General measures applied. Authorities are preparing measures to find a solution to some "microbiological exceedances", as improvement of the sewage pumping station and inspection of discharges into the water streams nearby.
PTCU9E	ANA DE AVIZ	Tejo	River	General measures applied. Authorities are preparing measures to find a solution to some "microbiological exceedances" with unknown/unexpected reasons and to improve BW quality. Reinforcement of the inspection actions both on local and on the river catchment level.
PTCX9N	MOSTEIRO	Tejo	River	Authorities are preparing measures to find a solution to some "microbiological exceedances" with unknown/unexpected reasons and to improve BW quality. General measures applied. Reinforcement of the inspection actions both on local and on the river catchment level.
PTCT7H	BURGÃES - RIO CAIMA	Vouga, Mondego, Lis e Ribeiras do Oeste	River	This bathing water is being studied for all pollution sources, and bathing water profile will be subject to review.
PTCH2M	TABERNA SECA	Tejo	River	There will be reinforcement of the inspection actions both on local and on the river catchment level.

\*For all bathing waters: General management measures applied.